



Enterprise-class Messaging

**Linux-based Email & Calendaring from Scalix**

- Robust, Enterprise-class Messaging
  - > 99.999% Availability with Clustering
  - > Linux-based; Native Linux Message Store
- Open Alternative to Exchange
  - > Open Standards, Open Source
  - > Directory / Slient / Ecosystem Flexibility
  - > Ability to co-exist with Exchange
- True Enterprise Clients; Full Suite
  - > True Enterprise Support of Outlook & Evolution w/ Full Collaboration
  - > Powerful "Outlook-like" Web Client
    - > No Training Required
    - > Same Full Functionality Across Browser Boundaries
  - > Mix & Match Best Client for the Task.
  - > Full Interoperability, Full Transparency of Data Between Blients
- Keep All Employees Connected while Mobile
  - > Mobile Web Client for Any Browser-based Device,
  - > Support for All Leading Full-Feature Wireless Devices
- Flexible Licensing Scheme
  - > Standard Users Free

**High Availability**

- Supports up to 8 nodes for 99.999% uptime
- Certified with RedHat Clustering Suite & SUSE Heartbeat
- Easy installation
- Included in Scalix Enterprise Edition

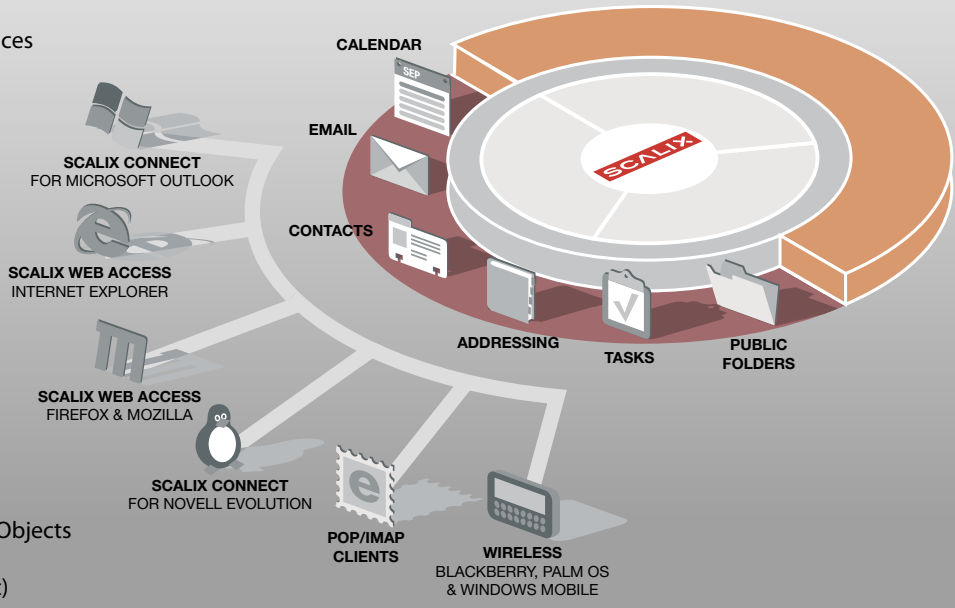
AJAX Web Client

Push Mail

Lights-out Email Administration

**Powerful, Flexible Administration**

- AJAX-based GUI Management Console
  - > Robust Monitoring
  - > Comprehensive Logs for Troubleshooting
  - > Centralized Administration of Multiple Servers
- Extensible
  - > Scriptable Plug-ins Automate Multi-step Tasks
- Command Line Interface
  - > Mature, 250+ commands
- Integrated Management through Active Directory
  - > AD GUI Extension
- Integrated Authentication & Single Sign On (SSO)
- Flexible Provisioning of Users, Groups, Address Book Objects
  - > Scalix Management Console
  - > External Directory (AD, eDirectory, OpenLDAP, etc)
  - > Using Other Enterprise Systems via Web Services



**7 Major Advantages of Scalix**

- i. More reliable email and calendaring
- ii. Linux platform benefits of reliability, security and price/performance
- iii. Highly scalable and resilient Scalix message store that never corrupts
- iv. Clients of choice: Outlook / Evolution / Scalix Web Access / Scalix Mobile Web
- v. Lights-out email administration
- vi. Avoid the direct costs of Exchange and better yet, avoid the hidden costs
- vii. Independence from vendor, licensing and technology lock-in

**Scalix Web Access**

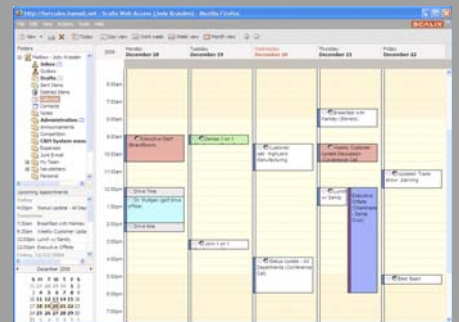
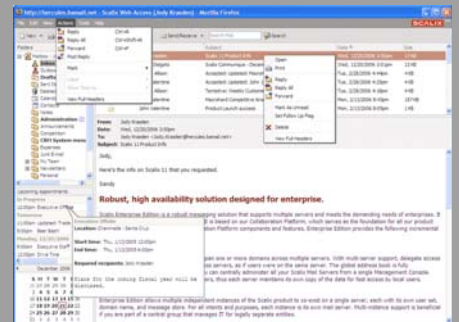
*Desktop Power, Browser Convenience*

- One Client – All Platforms
  - > Multi-browser (I/E, Firefox)
  - > Multi-platform (Windows, Mac, Linux)
- Interoperable with Outlook
  - > No Training Required
- Browser-based Desktop Power
  - > Full Groupware Functionality
- Scalix Pioneer Use of AJAX

**Scalix Mobile Web Client**

*Keeps Everyone Connected*

- Lightweight Web Interface
- Runs in Any Browser
- Perform Basic Operations:
  - > Compose, Read, Reply to
  - > Forward, Search Inbox
- Allows Employees to Stay Connected



INFINENT Sdn Bhd (773130-A)

www.infinent.com.my  
Tel : +6017-420 0188

sales@infinent.com.my  
Fax: +603-7492 0188

Unit 1117, Block A4, Leisure Commerce Square, 9, Jalan PJS 8/9, 46150 Petaling Jaya, Selangor. MALAYSIA.